

Tillotson

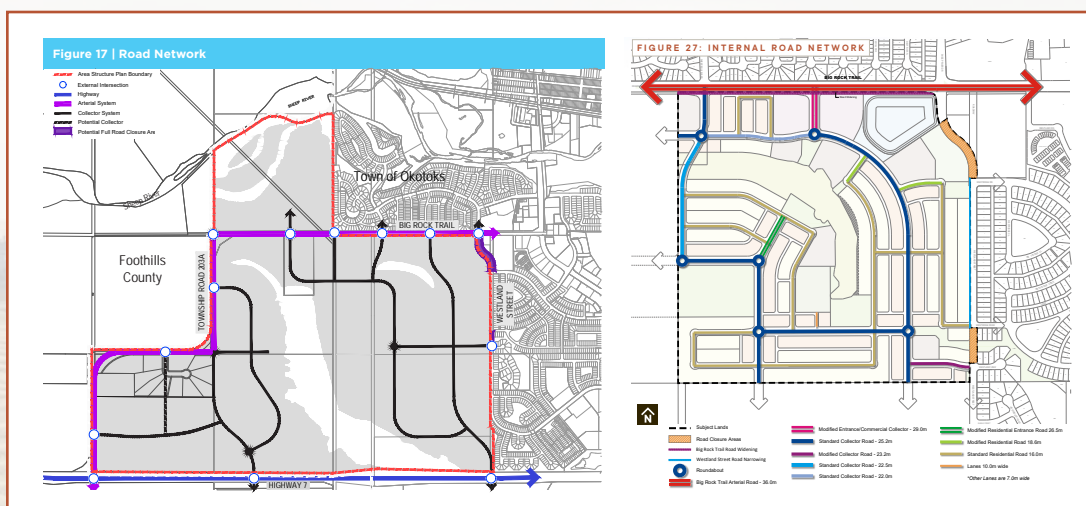
Road Closure Information Sheet

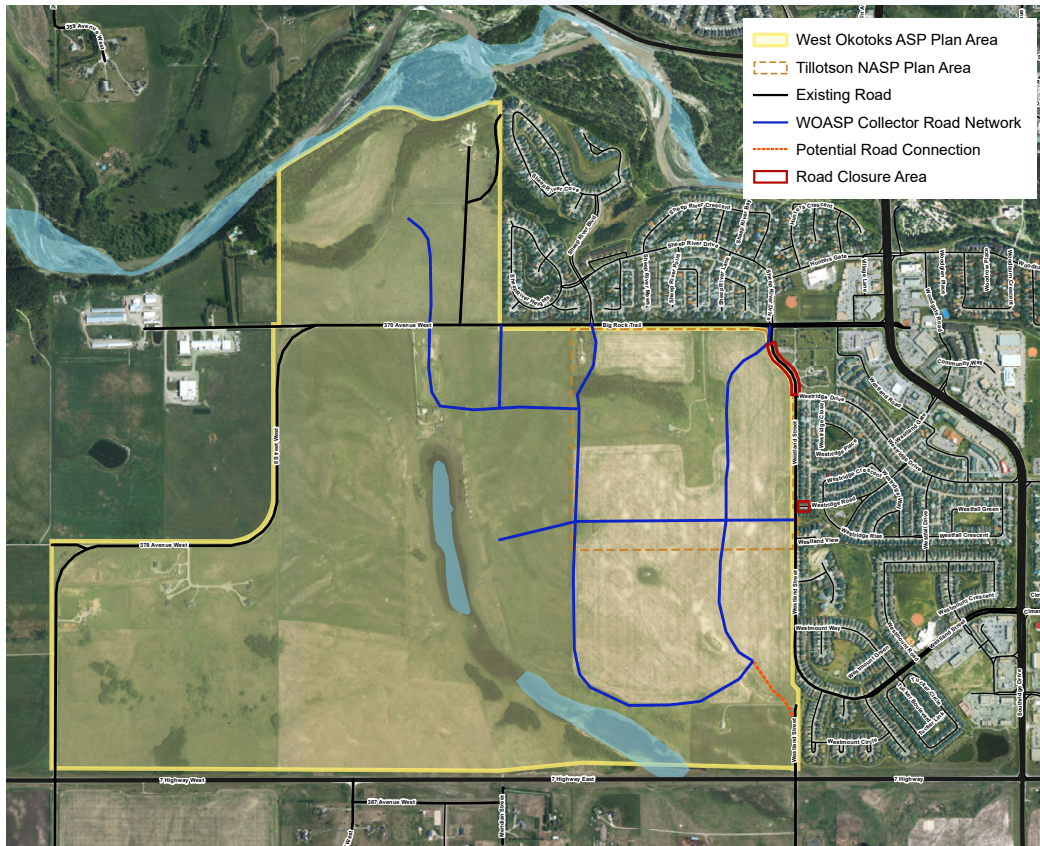
TILLOTSON ROAD CLOSURES

At the Tillotson Neighbourhood Area Structure Plan (NASP) public engagement event that took place in September 2022 many of the questions and concerns from members of the community were about the proposed road closures taking place on Westland Street. The proposed road closures included in the Tillotson NASP are consistent with those identified in the West Okotoks Area Structure Plan (ASP). The road closure areas were identified as a result of extensive scenario analysis as part of the Traffic Impact Assessment (TIA) for the ASP. The following information sheet has been prepared to provide a summary of the analysis that took place to give members of the community a better understanding of why the specific road closure areas were identified. The following information package includes details on the approved West Okotoks ASP road network, the proposed Tillotson NASP road network and the various scenarios that were evaluated in the West Okotoks Traffic Impact Assessment.

It is important to note that the proposed Westland Street road closures are not intended to be closed immediately should the Tillotson NASP be adopted by Council. The timing of the proposed road closures would be determined based on current and anticipated traffic volumes, traffic monitoring programs, and completion of suitable alternative road connections within Tillotson to Big Rock Trail and to Westland Street.

WEST OKOTOKS ASP & TILLOTSON NASP ROAD NETWORKS





SCENARIO ANALYSIS 1

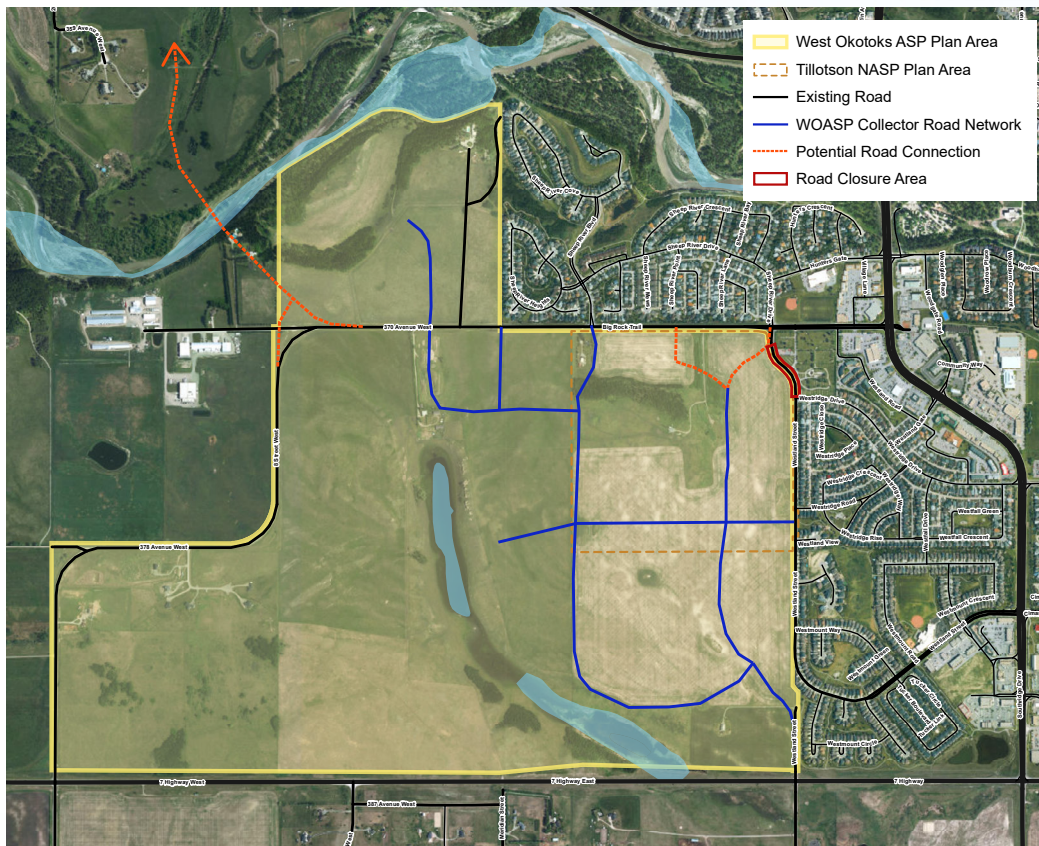
Potential Shortcutting Through Westridge Community

The West Okotoks ASP Traffic Impact Assessment (TIA) assessed the impacts of four different scenarios on the potential for shortcutting through Westridge Estates and along Cimmarron Drive and Cimmarron Blvd. The four scenarios included:

1. Status quo (no change of network)
2. Speed reduction within the Westridge community
3. Connection to Highway 7
4. No Direct Connection of Westridge Road to Westland Street

These scenarios were examined at the 2025 and 2045 horizon years and it was concluded that the most effective way to minimize the increase of the development-related traffic on the Westridge Community will be to construct a direct access to Highway 7 per Scenario 3.

This connection was included in the approved West Okotoks ASP but is outside the plan area for the Tillotson NASP.

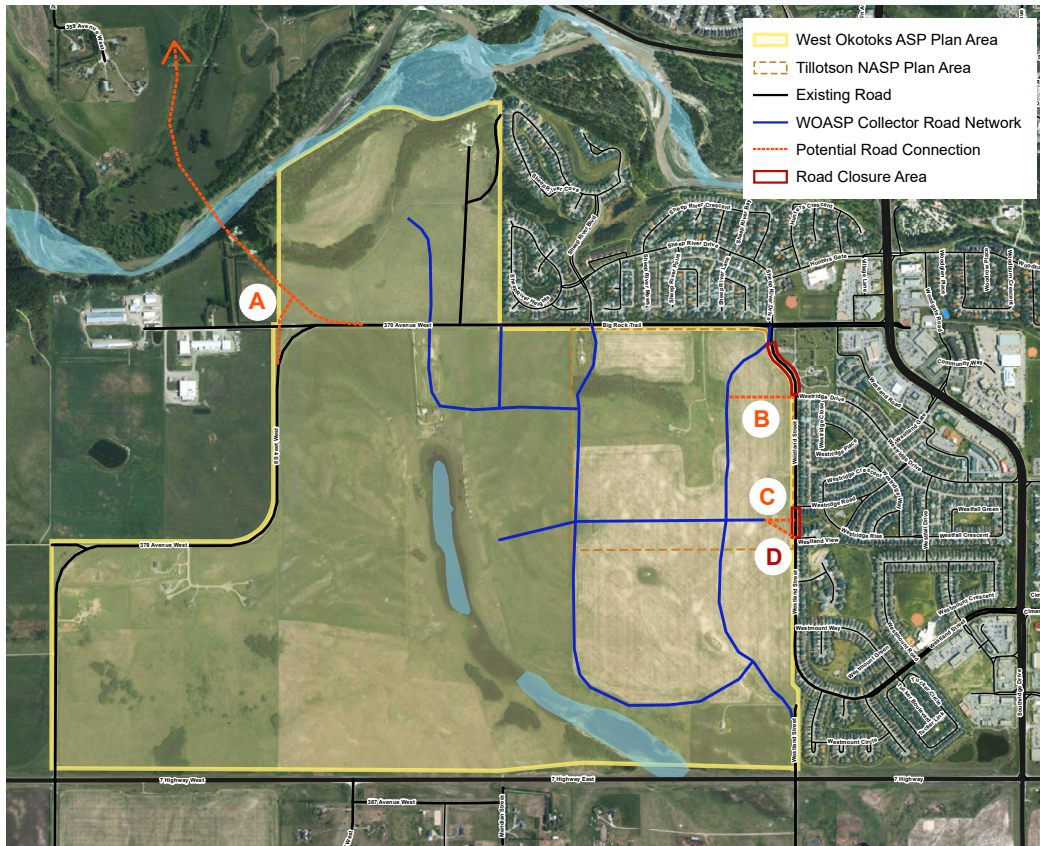


SCENARIO ANALYSIS 2

Big Rock Trail Collector Connection

The West Okotoks ASP Traffic Impact Assessment (TIA) assessed the impacts of multiple scenarios for connections to Big Rock Trail. As it relates to the Tillotson plan area, the evaluation included assessment of connecting to Big Rock Trail at either Sheep River Drive or in the middle of the quarter section directly off Big Rock Trail. These scenarios were evaluated against impacts with and without bypass connections to the northwest over the river. The analysis examined impacts at a horizon year of 2045.

Results of the analysis indicate that either with or without the regional bypass, the shortcutting through Sheep River Drive and Hunters Gate will be minimized with the two staggered T-Intersections. Therefore the approved West Okotoks ASP and the Tillotson ASP identify the main collector entrance into the community at the mid-point of the quarter section as opposed to at Sheep River Drive.



SCENARIO ANALYSIS 3

Westland Street Road Closures and Connections

The West Okotoks ASP Traffic Impact Assessment (TIA) assessed the impacts at the horizon year of 2045 of fifteen scenarios for different connections and road closures to minimize impacts to the Westridge Community. The scenarios were different combinations of included or excluded connections or road closures at the following locations:

- A. New bypass to the Northwest over the river from Big Rock Trail
- B. Connection to Westland Street at Westridge Drive
- C. Connection to Westland Street near Westridge Road and Westland View
- D. Road Closure of Westland Street between Westridge Road and Westland View

All scenarios included the connection to Highway 7 to the south and the road closure between Big Rock Trail and Westridge Drive to accommodate expansion of the cemetery. All scenarios identified the collector connecting to Big Rock Trail at Sheep River Drive as opposed to the middle of the quarter section, which was evaluated in a separate scenario analysis.

SCENARIO	A WEST BY-PASS	B NORTH CONNECTION TO WESTLAND STREET	C SOUTH CONNECTION TO WESTLAND STREET	D ROAD CLOSURE OF SOUTH WESTLAND STREET
1	Yes			
2	Yes	Yes		
3	Yes		Yes	Yes
4	Yes	Yes	Yes	Yes
4a	Yes	Yes (one-way westbound)	Yes	Yes
5		Yes	Yes	Yes
6			Yes	Yes
7	Yes		Yes (RIRO)	
8	Yes		Yes (+ traffic calming)	
9		Yes		Yes
10				Yes
11				
12		Yes		
13			Yes	
14			Yes (RIRO)	

Based on the traffic evaluation of each of these scenarios “Option 3 was identified to have the least negative impact on the existing neighborhood in respect to shortcutting and traffic volumes. It also promotes alternative modes of connectivity between communities” with the opportunity for an uninterrupted pathway connection between Westridge and Tillotson.

The analysis specified that “Connection to Westridge Drive should not be considered from a traffic perspective, as it may result in a substantial increase in traffic volumes along Westridge Drive” and “From a traffic viewpoint, a connection to Westland Street should be considered as it results in a better traffic distribution and minimizes the impact on the existing Westland Neighborhood.”

The Tillotson NASP is consistent with Scenario 3. Road closures have been identified between Big Rock Trail and Westridge Drive and between Westridge Road and Westland View, a collector connection has been identified to Westland Street at Westland View and a smaller local road connection at Westridge Road. These closures and connection will support connectivity with the adjacent community while limiting cut through traffic as much as possible.